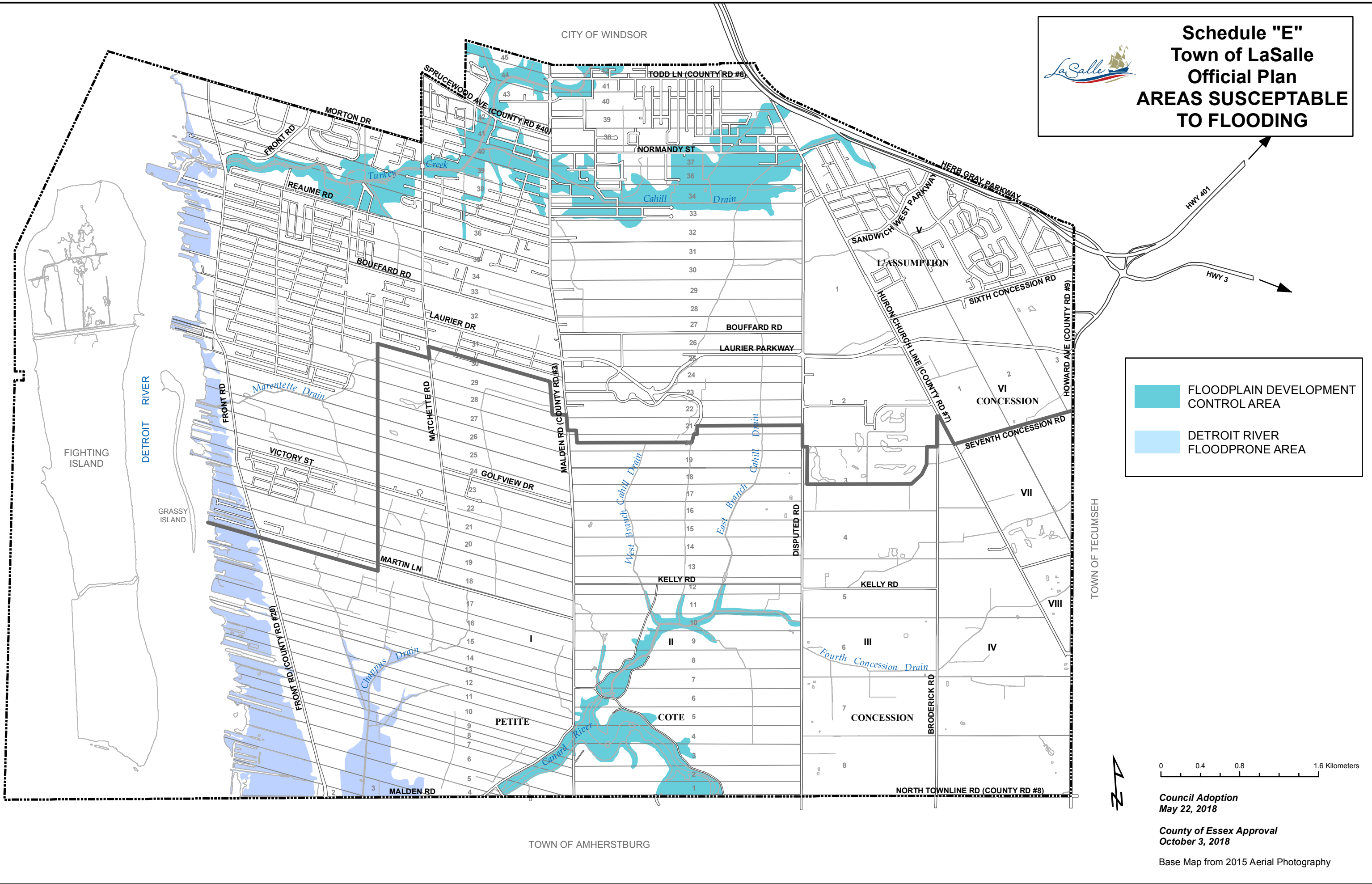




**Schedule "E"
Town of LaSalle
Official Plan
AREAS SUSCEPTIBLE
TO FLOODING**



	FLOODPLAIN DEVELOPMENT CONTROL AREA
	DETROIT RIVER FLOODPRONE AREA



Council Adoption
May 22, 2018

County of Essex Approval
October 3, 2018

Base Map from 2015 Aerial Photography

