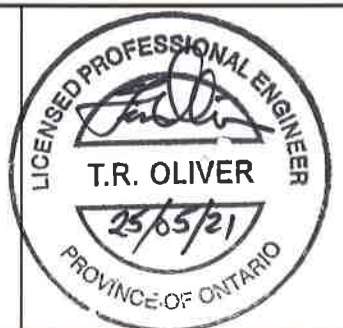
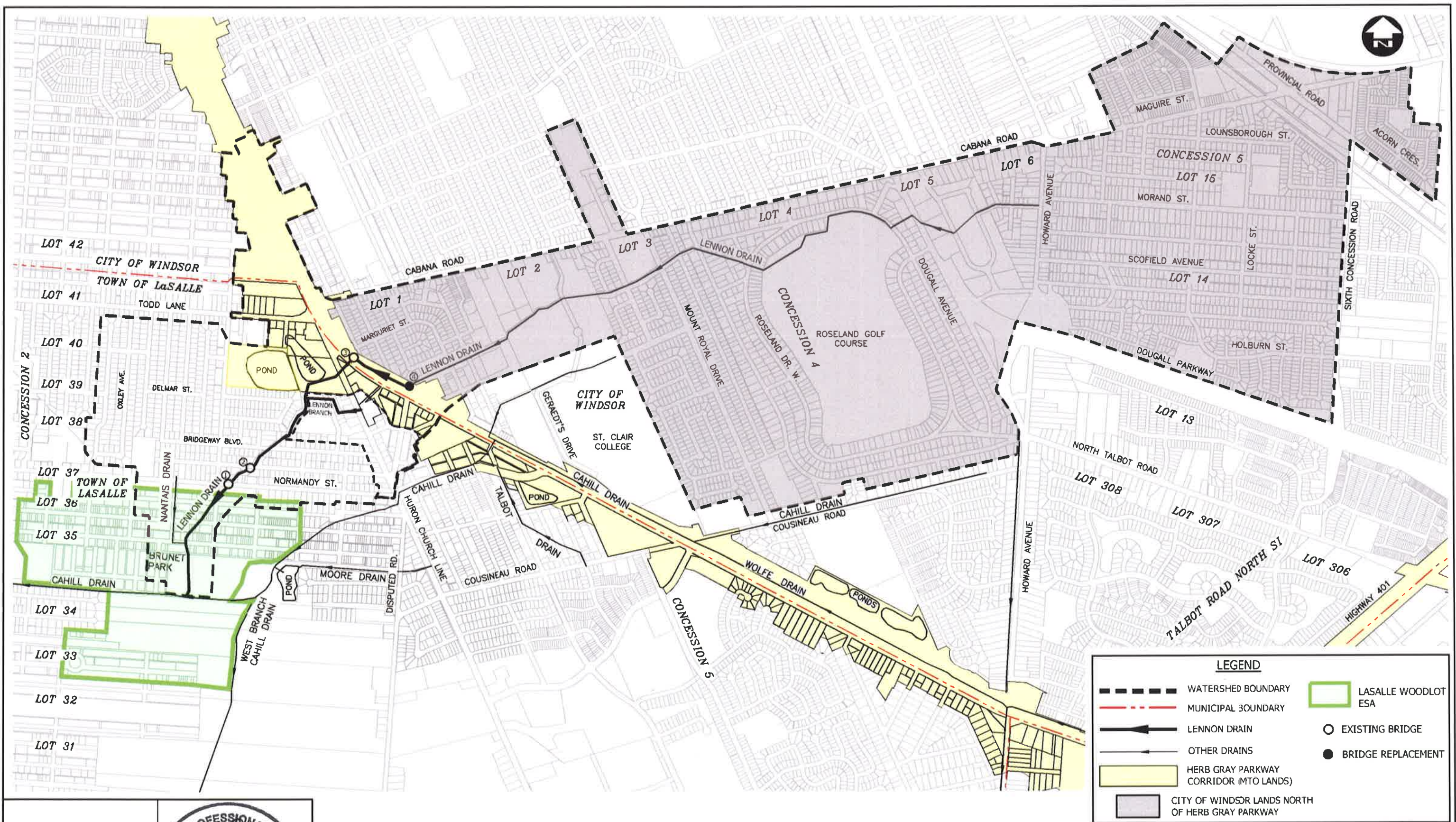


May 26, 2021 - 8:25pm G:\CAD\126578\LaSalle Drain\Lennon Drain-1600\Lennon Drain-Plan (Revised Mar 2021).dwg



Conditions of Use

Verify elevations and/or dimensions on drawing prior to use. Report any discrepancies to Dillon Consulting Limited.

Do not scale dimensions from drawing.

Do not modify drawing, re-use it, or use it for purposes other than those intended at the time of its preparation without prior written permission from Dillon Consulting Limited.

| No | ISSUED FOR | DATE | BY |
|----|---|------------|-----|
| 4 | SUBMISSION TO TOWN OF LaSALLE | MAY 25/21 | TRO |
| 3 | UPDATED DRAWINGS TO ADD LENNON DRAIN BRANCH | MAR 9/21 | TRO |
| 2 | RESUBMISSION TO N. J. PERALTA ENGINEERING | DEC 11/20 | TRO |
| 1 | SUBMISSION TO N. J. PERALTA ENGINEERING | SEPT 30/16 | TRO |

| | | | |
|--------|--------------|-------------|-----|
| DESIGN | TRO | REVIEWED BY | FRF |
| DRAWN | AJL/WLB | CHECKED BY | EPS |
| DATE | May 25, 2021 | | |
| SCALE | N.T.S. | | |

DILLON CONSULTING

PROJECT NO. 12-6578-1600

DRAWING SCALES BASED ON A 11" X 17" SHEET

| | |
|--|------------------------|
| 'SCHEDULE G' | |
| Drainage Report for the LOWER PORTION OF THE LENNON DRAIN Town of LaSalle & City of Windsor | |
| SHEET TITLE | OVERALL WATERSHED PLAN |
| PAGE NO | 1 of 8 |

May 26, 2021 - 8:29pm G:\CAD\126578\LaSalle Drain\1600\Lennon Drain_Plan (Revised Mar 2021).dwg

BENCHMARKS

BM1-TOP OF SOUTH END OF 1200mm ϕ CSP ON NORTH DRAIN OF CAHILL DRAIN, APPROXIMATELY 400m DOWNSTREAM OF LENNON DRAIN OUTLET
ELEV.=177.74m

BM2-TOP OF NORTH END OF 1800mm ϕ CONCRETE PIPE AT CROSSING NORMANDY ROAD APPROXIMATELY STATION 0+590.
ELEV.=178.55m

BM3-TOP OF CONCRETE SILL OF INLET STRUCTURE AT HERB GRAY PARKWAY APPROXIMATELY STATION 1+430.
ELEV.=178.79m

BM4-TOP OF CENTRELINE OF WEST CONCRETE HEADWALL AT APPROXIMATELY STATION 1+703.
ELEV.=181.22m

CONTRACTOR TO CONFIRM BENCHMARKS PRIOR TO CONSTRUCTION

BLOCK 'A' AREA

NON AG. LANDS 50.58 Ha
LaSALLE ROADS 16.90 Ha
TOTAL 67.48 Ha

HG PARKWAY AREA

WITHIN LaSALLE 24.36 Ha
(excluding BLOCK 'C')
WITHIN WINDSOR 23.82 Ha
TOTAL 48.18 Ha

BLOCK 'B' AREA

NON AG. LANDS 11.46 Ha
LaSALLE ROADS 3.59 Ha
TOTAL 15.05 Ha

CITY OF WINDSOR AREA

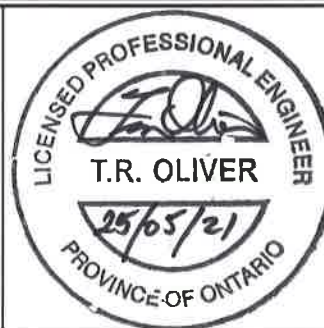
LANDS 390.40 Ha
ROADS (excl. Parkway) 105.43 Ha
TOTAL 495.83 Ha

BLOCK 'C' AREA (LENNON DRAIN BRANCH)

NON AG. LANDS 8.88 Ha
LaSALLE ROADS 2.10 Ha
H.G. PARKWAY 1.71 Ha
TOTAL 12.69 Ha

LEGEND

| | | | |
|--|--|--|--------------------|
| | WATERSHED BOUNDARY | | BLOCK 'A' |
| | MUNICIPAL BOUNDARY | | BLOCK 'B' |
| | LENNON DRAIN | | BLOCK 'C' |
| | OTHER DRAINS | | EXISTING BRIDGE |
| | HERB GRAY PARKWAY CORRIDOR (MTO LANDS) | | BRIDGE REPLACEMENT |
| | CITY OF WINDSOR LANDS NORTH OF HERB GRAY PARKWAY | | |



Conditions of Use

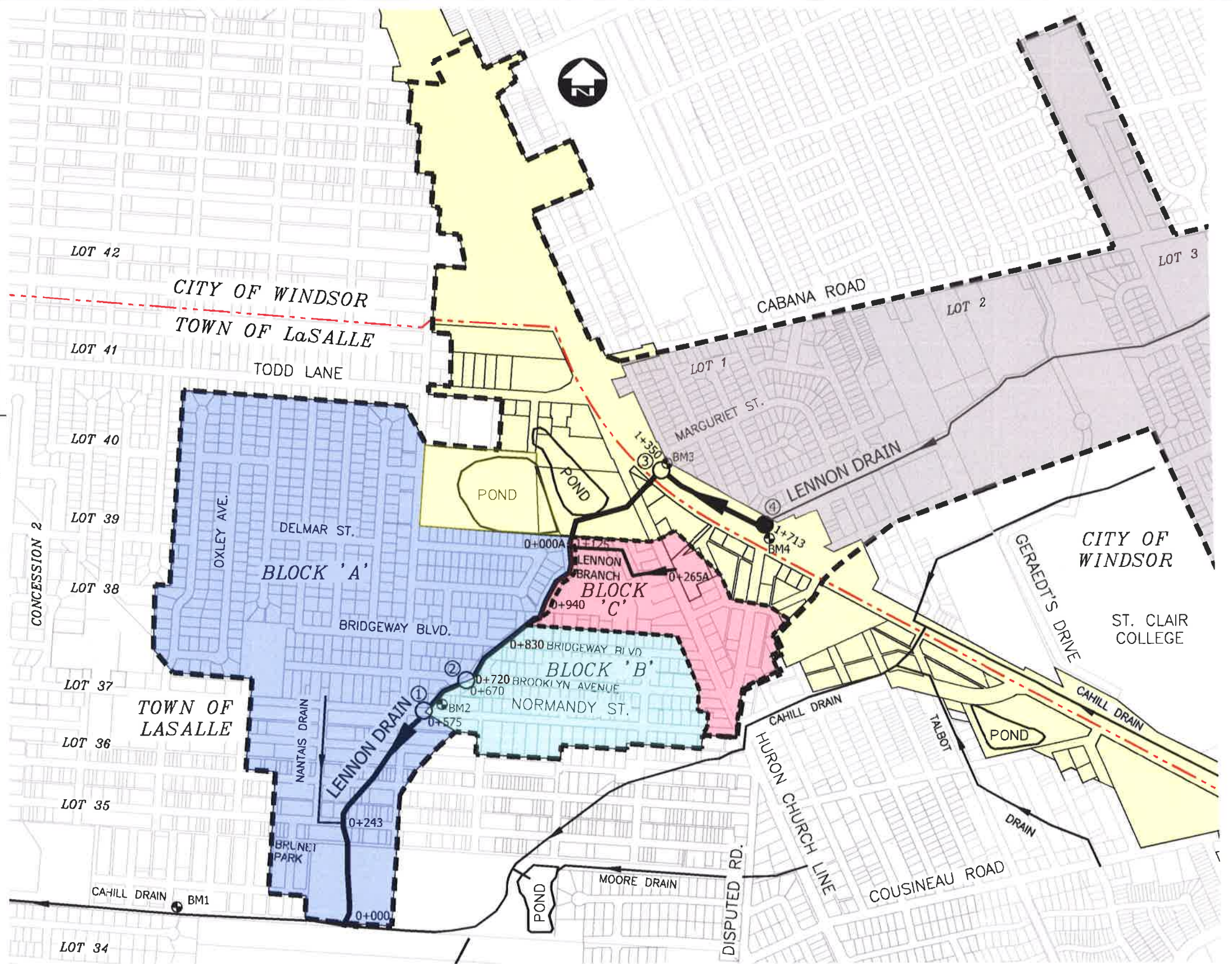
Verify elevations and/or dimensions on drawing prior to use. Report any discrepancies to Dillon Consulting Limited.
Do not scale dimensions from drawing.
Do not modify drawing, re-use it, or use it for purposes other than those intended at the time of its preparation without prior written permission from Dillon Consulting Limited.

| No | ISSUED FOR | DATE | BY |
|----|---|------------|-----|
| 4 | SUBMISSION TO TOWN OF LaSALLE | MAY 25/21 | TRO |
| 3 | UPDATED DRAWINGS TO ADD LENNON DRAIN BRANCH | MAR 9/21 | TRO |
| 2 | RESUBMISSION TO N. J. PERALTA ENGINEERING | DEC 11/20 | TRO |
| 1 | SUBMISSION TO N. J. PERALTA ENGINEERING | SEPT 30/16 | TRO |

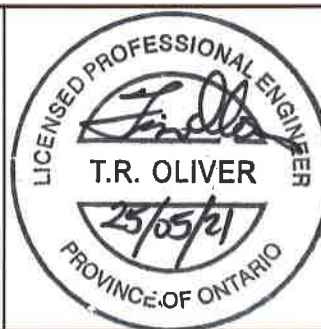
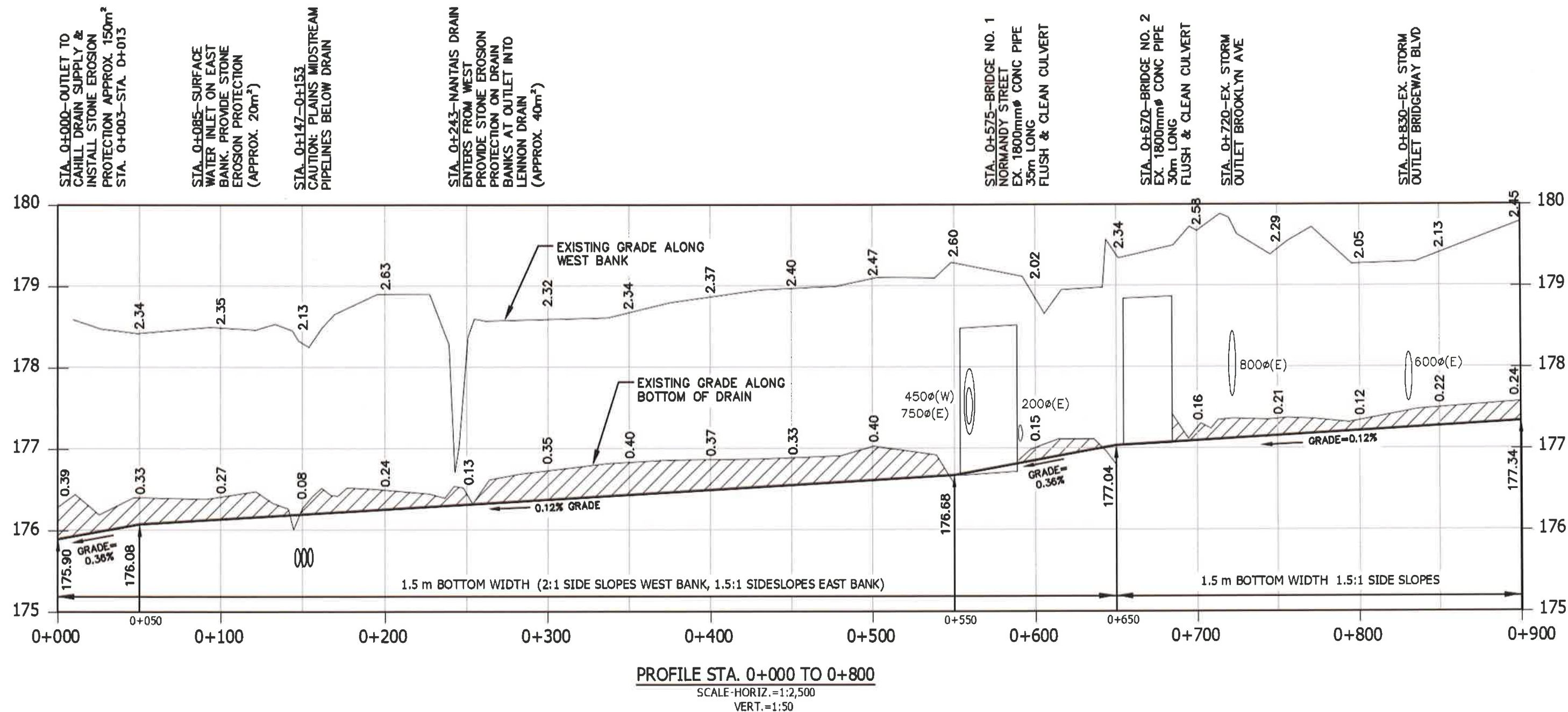
| | | | |
|--------|--------------|-------------|-----|
| DESIGN | TRO | REVIEWED BY | FRF |
| DRAWN | AJL/WLB | CHECKED BY | EPS |
| DATE | May 25, 2021 | | |
| SCALE | N.T.S. | | |

| | |
|---|--------------|
| | |
| PROJECT NO | 12-6578-1600 |
| DRAWING SCALES BASED ON A 11" X 17" SHEET | |

| | |
|---|------------------|
| 'SCHEDULE G' Drainage Report for the LOWER PORTION OF THE LENNON DRAIN Town of LaSalle & City of Windsor | |
| SHEET TITLE | PLAN ENLARGEMENT |
| PAGE NO | 2 of 8 |



May 26, 2021 - E:\31pin & \CADD\26578\JL\JL.dwg
Lennon Drain Profile (Revised Mar 2021).dwg



Conditions of Use

Verify elevations and/or dimensions on drawing prior to use.
Report any discrepancies to Dillon Consulting Limited.

Do not scale dimensions from drawing.

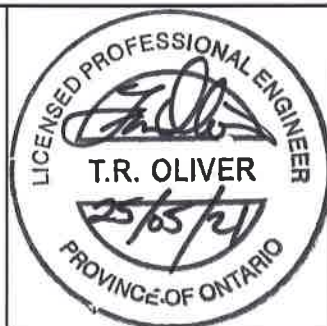
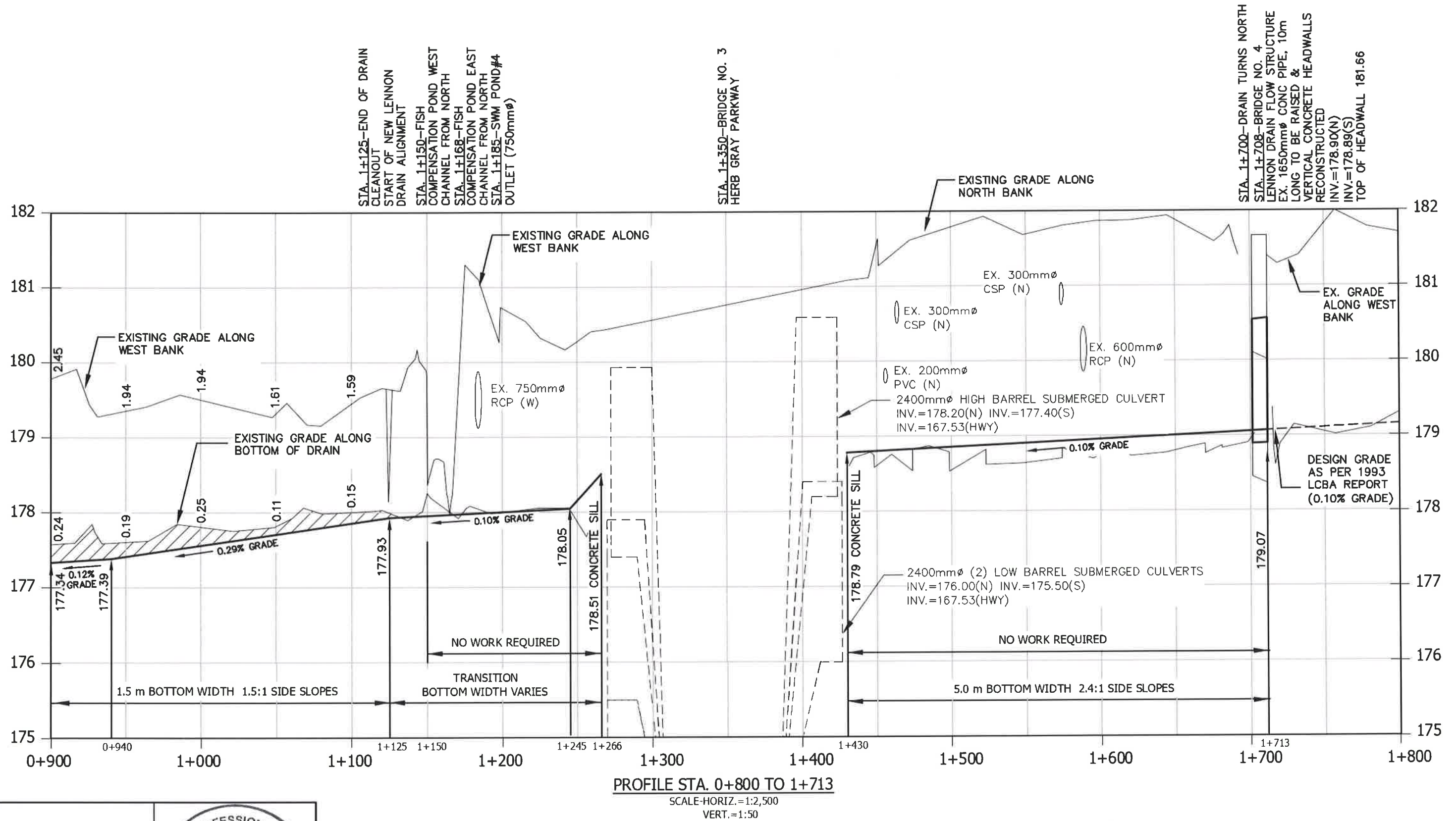
Do not modify drawing, re-use it, or use it for purposes other than those intended at the time of its preparation without prior written permission from Dillon Consulting Limited.

| No. | ISSUED FOR | DATE | BY |
|-----|---|------------|-----|
| 4 | SUBMISSION TO TOWN OF LASALLE | MAY 25/21 | TRO |
| 3 | UPDATED DRAWINGS TO ADD LENNON DRAIN BRANCH | MAR 9/21 | TRO |
| 2 | RESUBMISSION TO N. J. PERALTA ENGINEERING | DEC 11/20 | TRO |
| 1 | SUBMISSION TO N. J. PERALTA ENGINEERING | SEPT 30/16 | TRO |

| DESIGN | REVIEWED BY |
|---------|--------------|
| TRO | FRF |
| DRAWN | CHECKED BY |
| AJL/WLB | EPS |
| DATE | May 25, 2021 |
| SCALE | AS SHOWN |

| |
|---|
| |
| PROJECT NO. 12-6578-1600 |
| DRAWING SCALES BASED ON A 11" X 17" SHEET |

| |
|--|
| 'Schedule C' |
| Drainage Report for the LOWER PORTION OF THE LENNON DRAIN Town of LaSalle & City of Windsor |
| SHEET TITLE LENNON DRAIN PROFILE STA. 0+000 TO STA. 0+800 |
| PAGE NO. 3 of 8 |



Conditions of Use

Do not scale dimensions from drawing

Do not modify drawing, re-use it, or use it for purposes other than those intended at the time of its preparation without prior written permission from Dillon Consulting Limited.

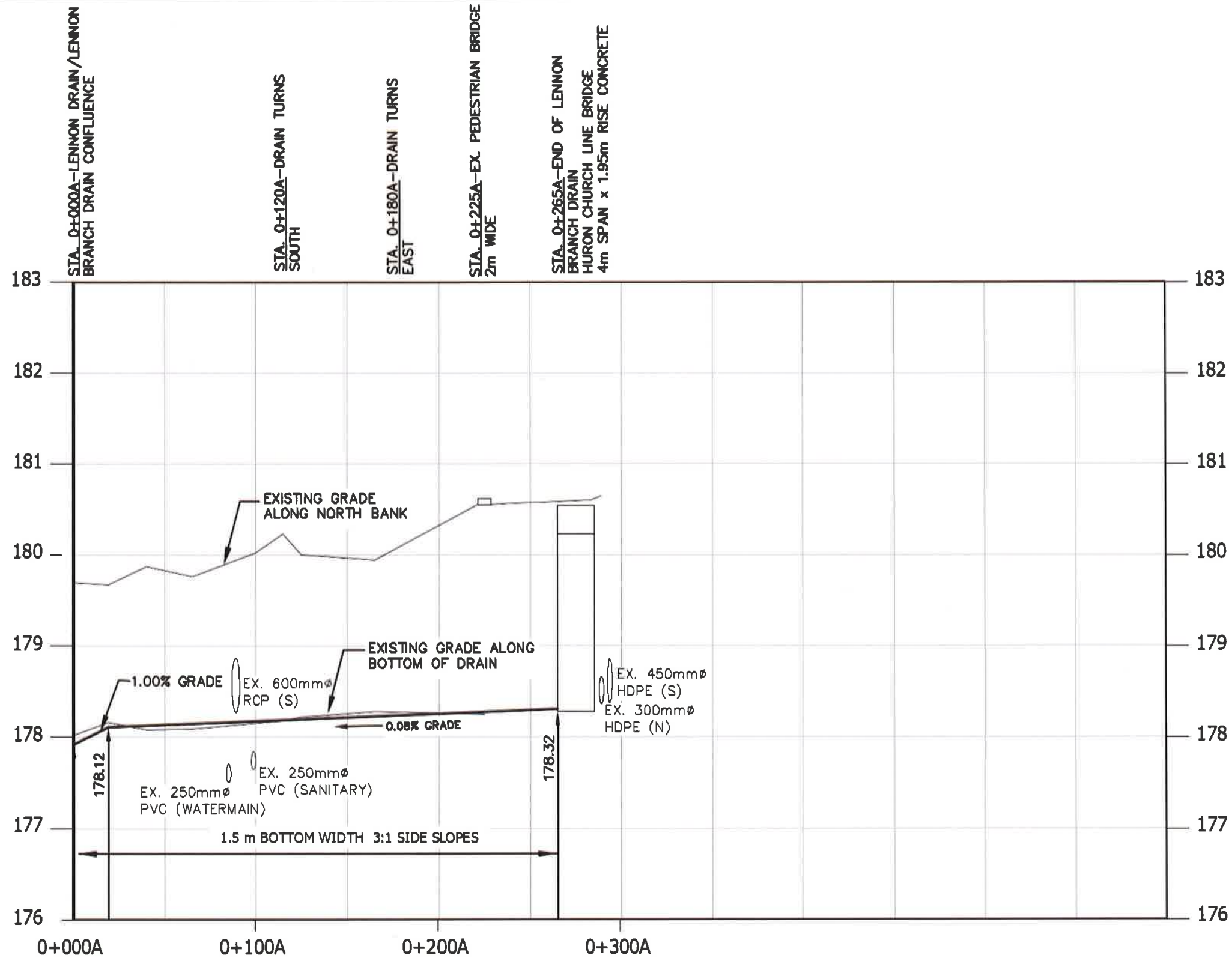
| | | | |
|----|---|------------|-----|
| | | | |
| | | | |
| 4 | SUBMISSION TO TOWN OF LaSALLE | MAY 25/21 | TRO |
| 3 | UPDATED DRAWINGS TO ADD LENNON DRAIN BRANCH | MAR 9/21 | TRO |
| 2 | RESUBMISSION TO N. J. PERALTA ENGINEERING | DEC 11/20 | TRO |
| 1 | SUBMISSION TO N. J. PERALTA ENGINEERING | SEPT 30/16 | TRO |
| No | ISSUED FOR | DATE | BY |

| | | | |
|--------|--------------|-------------|-----|
| DESIGN | TRO | REVIEWED BY | FRF |
| DRAWN | AJL/WLB | CHECKED BY | EPS |
| DATE | May 25, 2021 | | |
| SCALE | AS SHOWN | | |

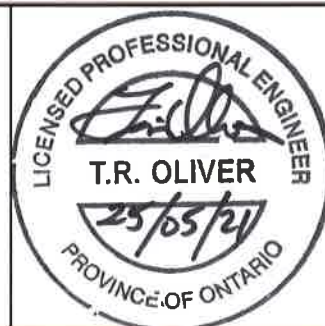


| | |
|---|--|
| <p align="center">'Schedule C'</p> <p align="center">Drainage Report for the LOWER PORTION OF THE LENNON DRAIN Town of LaSalle & City of Windsor</p> | |
| <p>SHEET TITLE</p> | <p align="center">LENNON DRAIN PROFILE STA. 0+800 TO STA. 1+713</p> |
| <p>PAGE NO.</p> | <p align="center">4 of 8</p> |

May 28, 2021 - 8:30pm G:\CA0\126578\Scale Drain\Lenon Drain-1600\Lenon Drain_Profile (Revised Mar 2021).dwg



PROFILE STA. 0+000A TO 0+265A
SCALE-HORIZ. = 1:2500
VERT. = 1:50



Conditions of Use

Verify elevations and/or dimensions on drawing prior to use.
Report any discrepancies to Dillon Consulting Limited.

Do not scale dimensions from drawing.

Do not modify drawing, re-use it, or use it for purposes other than those intended at the time of its preparation without prior written permission from Dillon Consulting Limited.

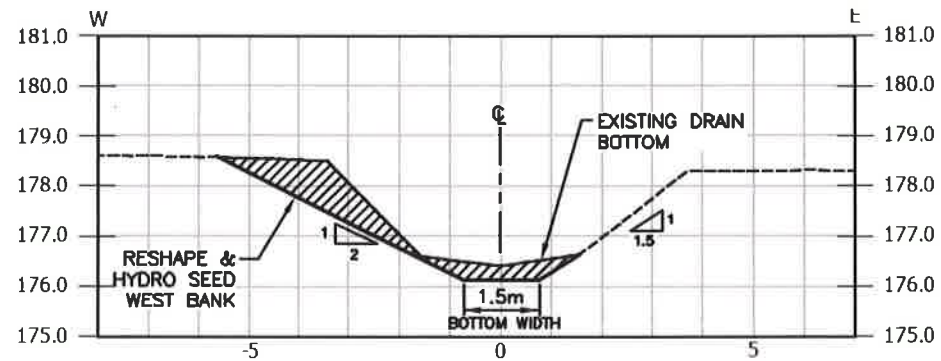
| No. | ISSUED FOR | DATE | BY |
|-----|---|------------|-----|
| 4 | SUBMISSION TO TOWN OF LASALLE | MAY 25/21 | TRO |
| 3 | UPDATED DRAWINGS TO ADD LENNON DRAIN BRANCH | MAR 9/21 | TRO |
| 2 | RESUBMISSION TO N. J. PERALTA ENGINEERING | DEC 11/20 | TRO |
| 1 | SUBMISSION TO N. J. PERALTA ENGINEERING | SEPT 30/16 | TRO |

| | | | |
|--------|--------------|-------------|-----|
| DESIGN | TRO | REVIEWED BY | FRF |
| DRAWN | AJL/WLB | CHECKED BY | EPS |
| DATE | May 25, 2021 | | |
| SCALE | AS SHOWN | | |

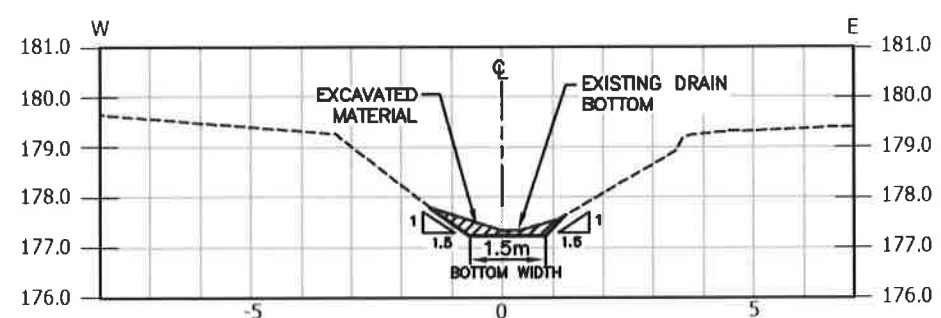
| | |
|---|--------------|
| PROJECT NO. | 12-6578-1600 |
| DRAWING SCALES BASED ON A 11" X 17" SHEET | |

| | |
|--|---|
| 'Schedule C' | |
| Drainage Report for the LOWER PORTION OF THE LENNON DRAIN Town of LaSalle & City of Windsor | |
| SHEET TITLE | LENNON DRAIN BRANCH PROFILE STA. 0+000A TO STA. 0+265A |
| PAGE NO. | 5 of 8 |

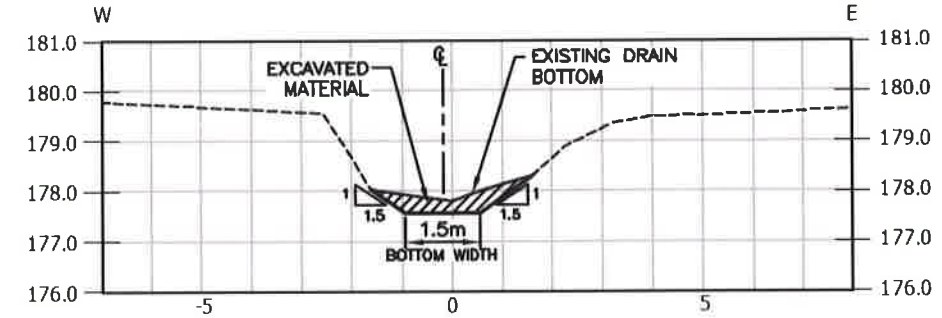
May 28, 2021 - 8:33pm C:\CAD\126578\LaSalle Drain\Lennon Drain-1600\Drawn Drain_Profile (Revised Mar 2021).dwg



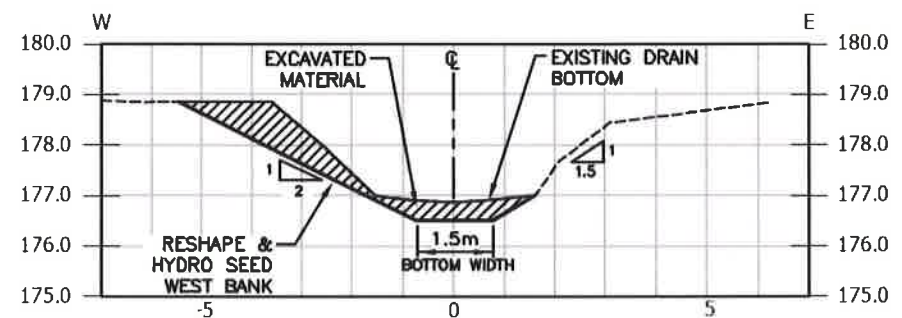
CROSS SECTION 0+100
SCALE-1:150



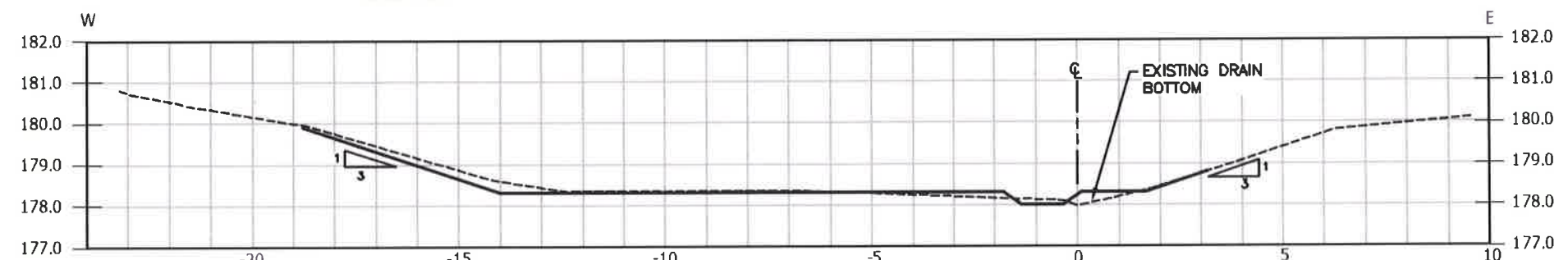
CROSS SECTION 0+800
SCALE-1:150



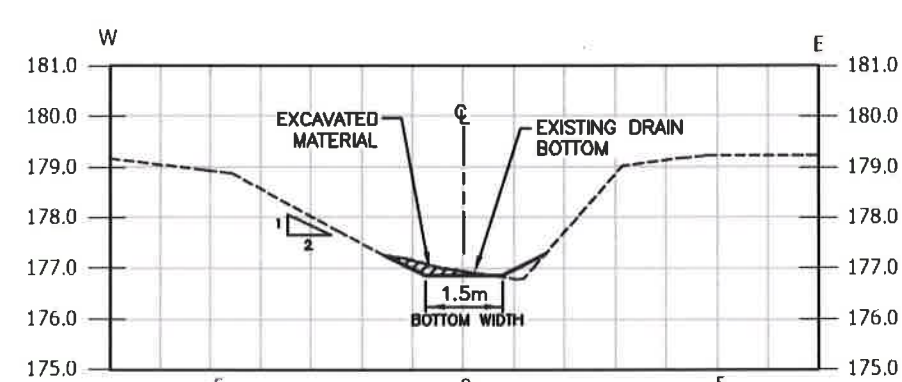
CROSS SECTION 1+000
SCALE-1:150



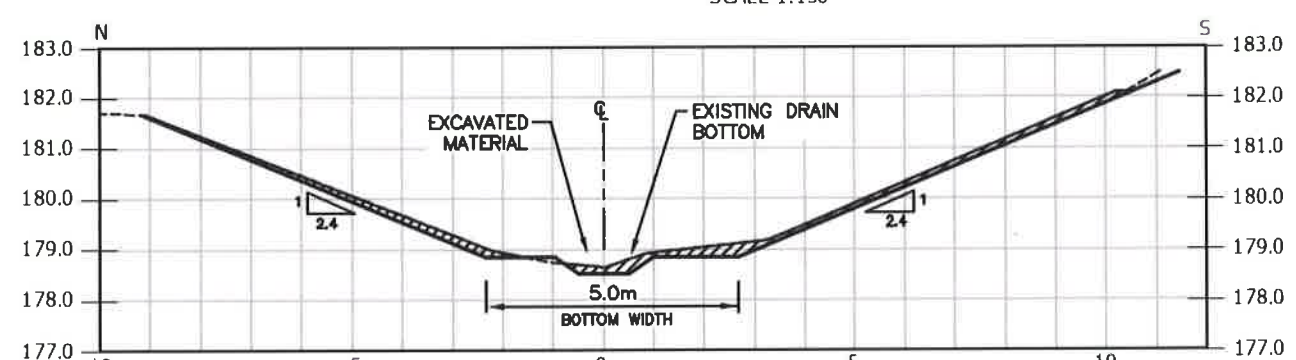
CROSS SECTION 0+400
SCALE-1:150



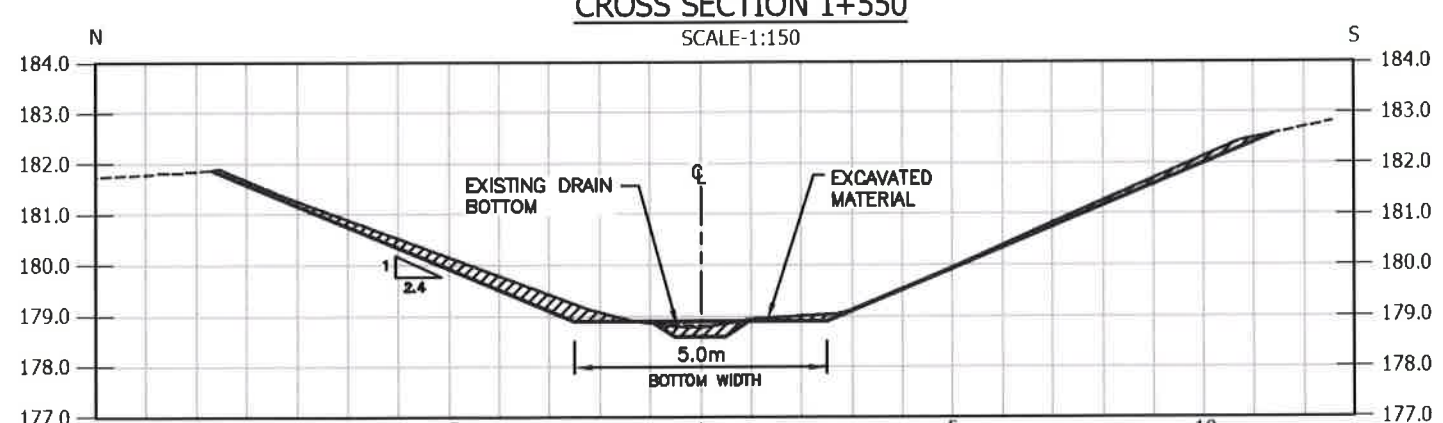
CROSS SECTION 1+200
SCALE-1:150



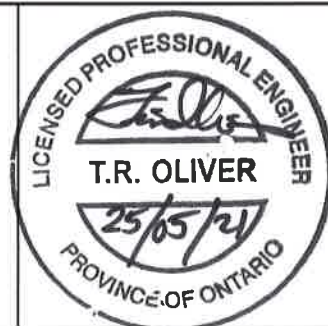
CROSS SECTION 0+600
SCALE-1:150



CROSS SECTION 1+550
SCALE-1:150



CROSS SECTION 1+650
SCALE-1:150



Conditions of Use

Verify elevations and/or dimensions on drawing prior to use.
Report any discrepancies to Dillon Consulting Limited.

Do not scale dimensions from drawing.

Do not modify drawing, re-use it, or use it for purposes other
than those intended at the time of its preparation without prior
written permission from Dillon Consulting Limited.

| No. | ISSUED FOR | DATE | BY |
|-----|---|------------|-----|
| 4 | SUBMISSION TO TOWN OF LaSALLE | MAY 25/21 | TRO |
| 3 | UPDATED DRAWINGS TO ADD LENNON DRAIN BRANCH | MAR 9/21 | TRO |
| 2 | RESUBMISSION TO N. J. PERALTA ENGINEERING | DEC 11/20 | TRO |
| 1 | SUBMISSION TO N. J. PERALTA ENGINEERING | SEPT 30/16 | TRO |

| | | | |
|--------|--------------|-------------|-----|
| DESIGN | TRO | REVIEWED BY | FRF |
| DRAWN | AJL/WLB | CHECKED BY | EPS |
| DATE | May 25, 2021 | | |
| SCALE | AS SHOWN | | |

| | |
|--|--------------|
| | |
| PROJECT NO. | 12-6578-1600 |
| DRAWING SCALES BASED ON A 11" X 17" SHEET | |

'Schedule C'

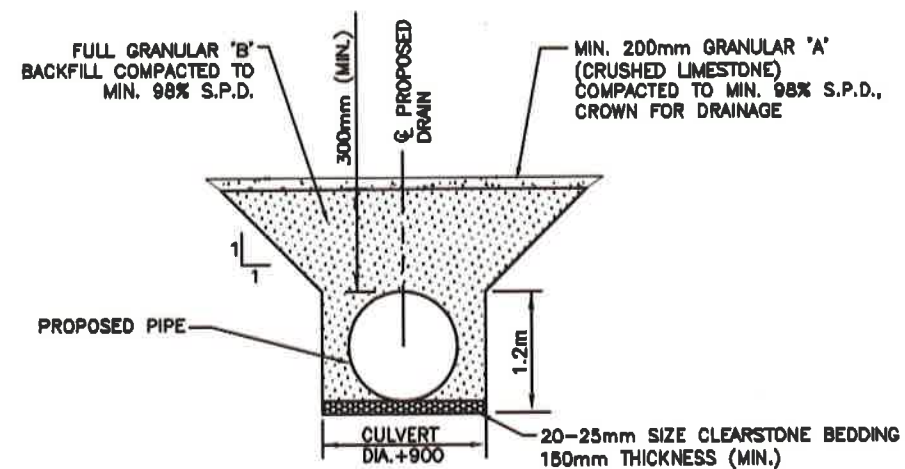
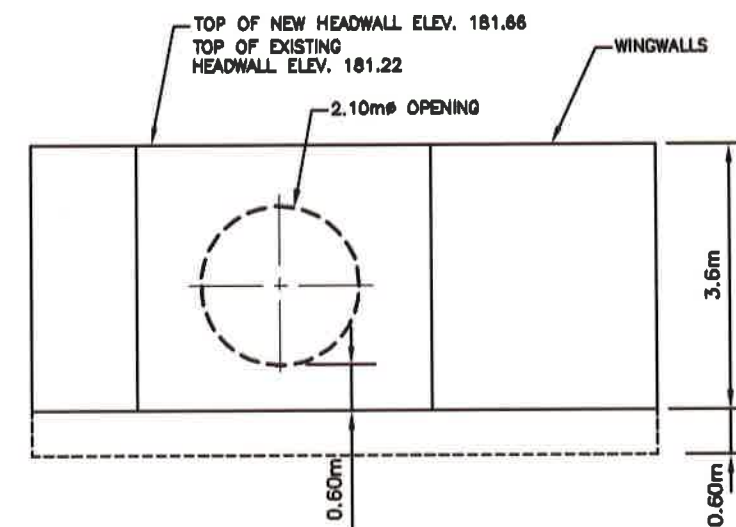
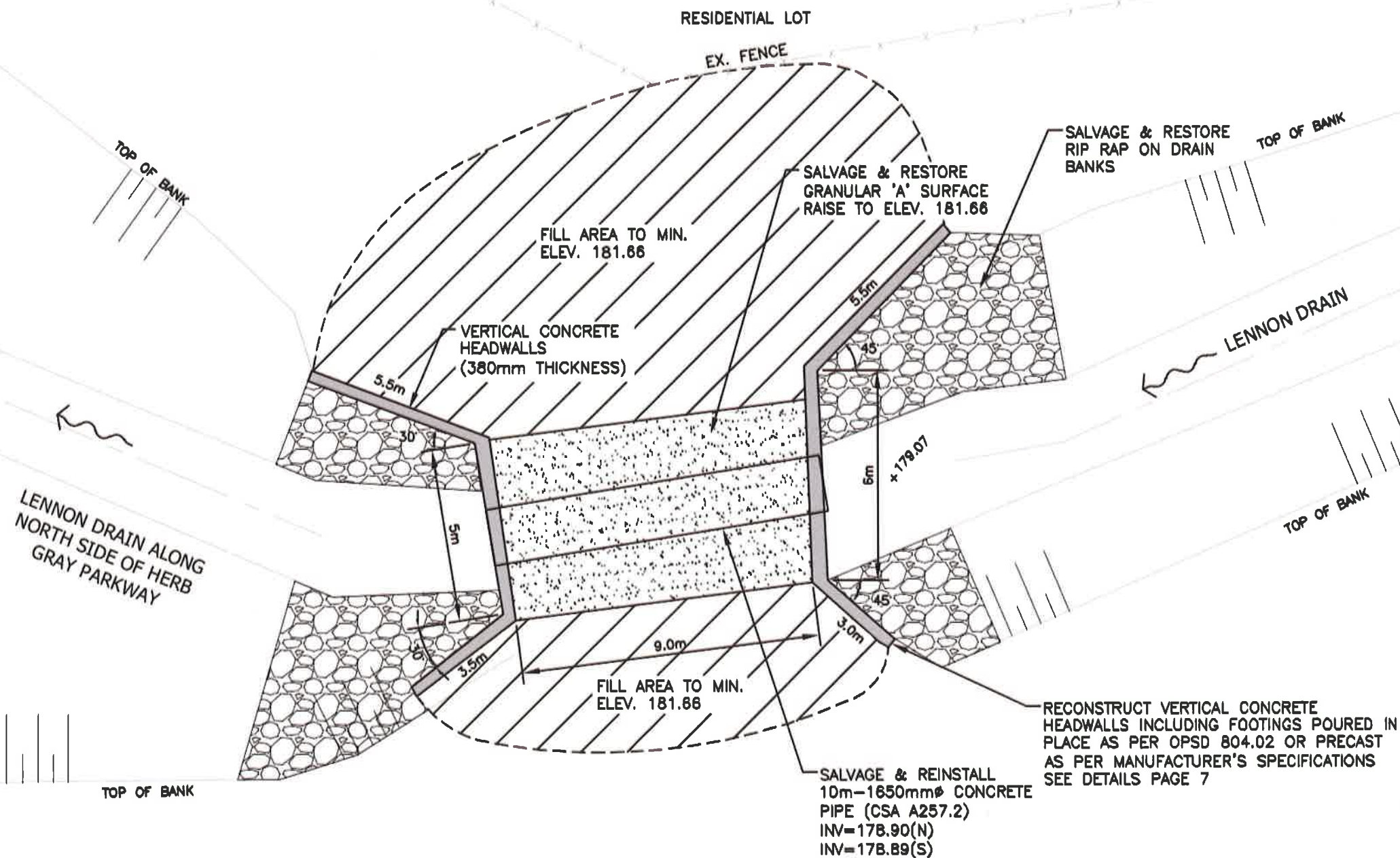
Drainage Report for the
LOWER PORTION OF THE
LENNON DRAIN
Town of LaSalle & City of Windsor

SHEET TITLE

CROSS SECTIONS

PAGE NO

6 of 8



'Schedule C'

Drainage Report for the
**LOWER PORTION OF THE
LENNON DRAIN**
Town of LaSalle & City of Windsor

| | |
|-------------|--|
| SHEET TITLE | |
|-------------|--|

BRIDGE NO. 4 DETAILS

| |
|---------|
| PAGE NO |
|---------|

7 of 8



Conditions of Use

Verify elevations and/or dimensions on drawing prior to use.
Report any discrepancies to Dillon Consulting Limited.

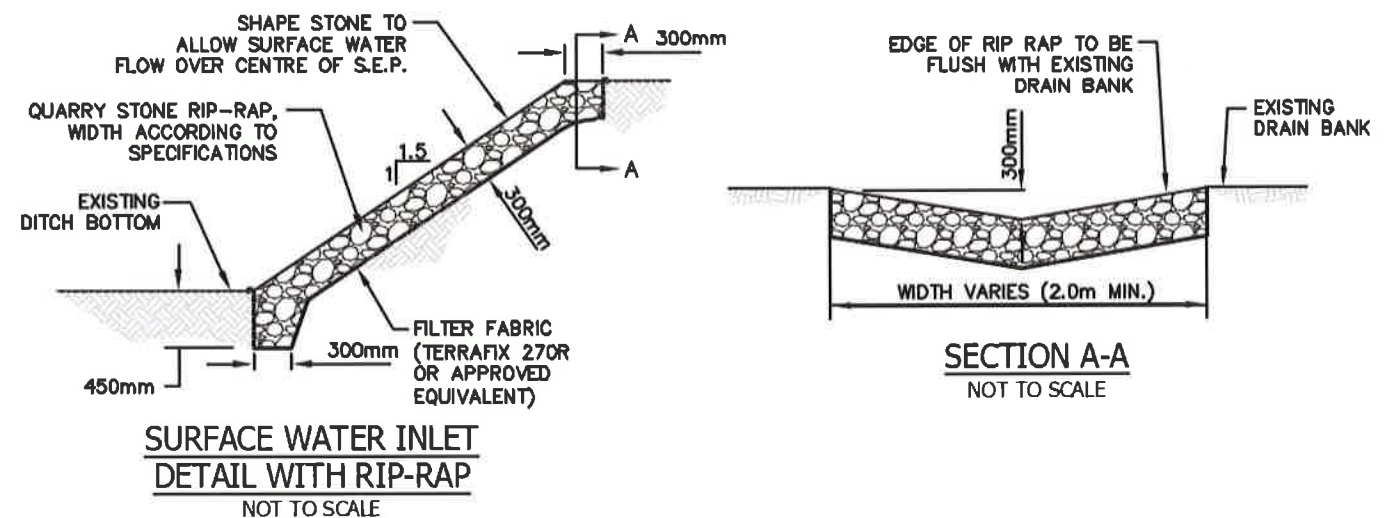
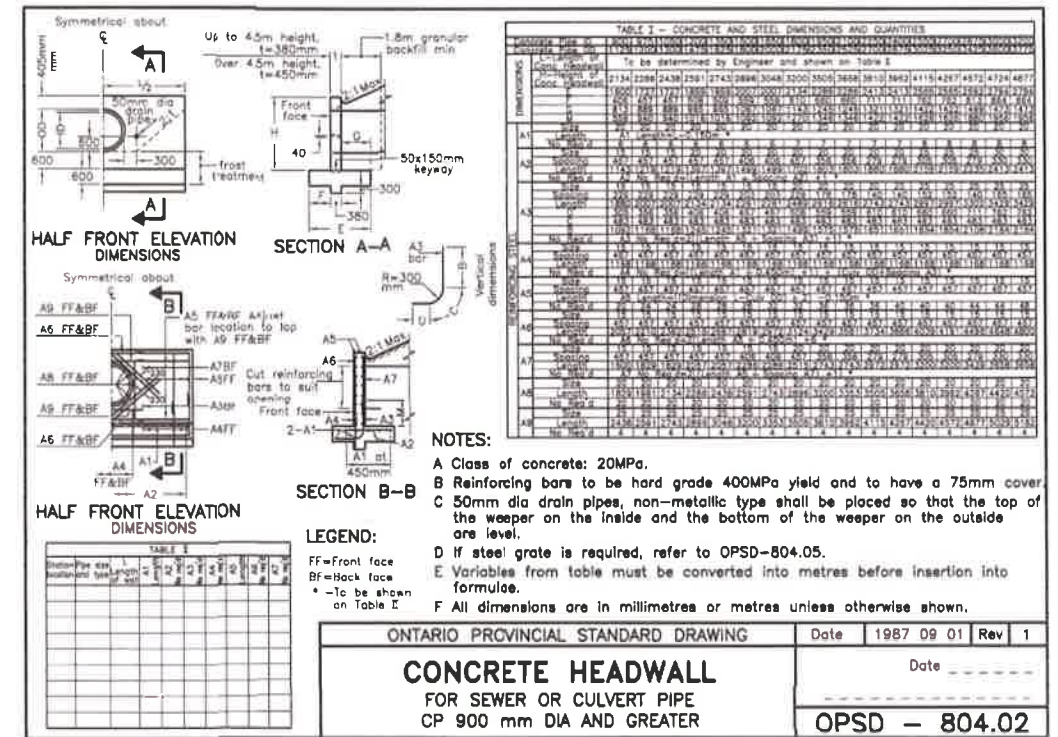
Do not scale dimensions from drawing.

Do not modify drawing, re-use it, or use it for purposes other than those intended at the time of its preparation without prior written permission from Dillon Consulting Limited

| | | | |
|-----|---|------------|-----|
| | | | |
| | | | |
| 4 | SUBMISSION TO TOWN OF LaSALLE | MAY 25/21 | TRO |
| 3 | UPDATED DRAWINGS TO ADD LENNON DRAIN BRANCH | MAR 9/21 | TRO |
| 2 | RESUBMISSION TO N. J. PERALTA ENGINEERING | DEC 11/20 | TRO |
| 1 | SUBMISSION TO N. J. PERALTA ENGINEERING | SEPT 30/16 | TRO |
| No. | ISSUED FOR | DATE | BY |

| | | | |
|--------|--------------|-------------|-----|
| DESIGN | TRO | REVIEWED BY | FRF |
| DRAWN | AJL/WLB | CHECKED BY | EPS |
| DATE | May 25, 2021 | | |
| SCALE | AS SHOWN | | |





Do not modify drawing, re-use it, or use it for purposes other than those intended at the time of its preparation without prior written permission from Dillon Consulting Limited.

| | | | |
|-----|---|------------|-----|
| | | | |
| | | | |
| 4 | SUBMISSION TO TOWN OF LaSALLE | MAY 25/21 | TRO |
| 3 | UPDATED DRAWINGS TO ADD LENNON DRAIN BRANCH | MAR 9/21 | TRO |
| 2 | RESUBMISSION TO N. J. PERALTA ENGINEERING | DEC 11/20 | TRO |
| 1 | SUBMISSION TO N. J. PERALTA ENGINEERING | SEPT 30/16 | TRO |
| No. | ISSUED FOR | DATE | BY |

| | | | |
|----------------------------|--------------------|---|--|
| DESIGN TRO | REVIEWED BY FRF |  | Drainage Report for the LOWER PORTION OF THE LENNON DRAIN Town of LaSalle & City of Windsor |
| DRAWN AJL/WLB | CHECKED BY EPS | | SHEET TITLE DETAILS |
| DATE May 25, 2021 | | | |
| SCALE AS SHOWN | | | |
| PROJECT NO 12-6578-1600 | | DRAWING SCALES BASED ON A 11" X 17" SHEET | PAGE NO. 8 of 8 |